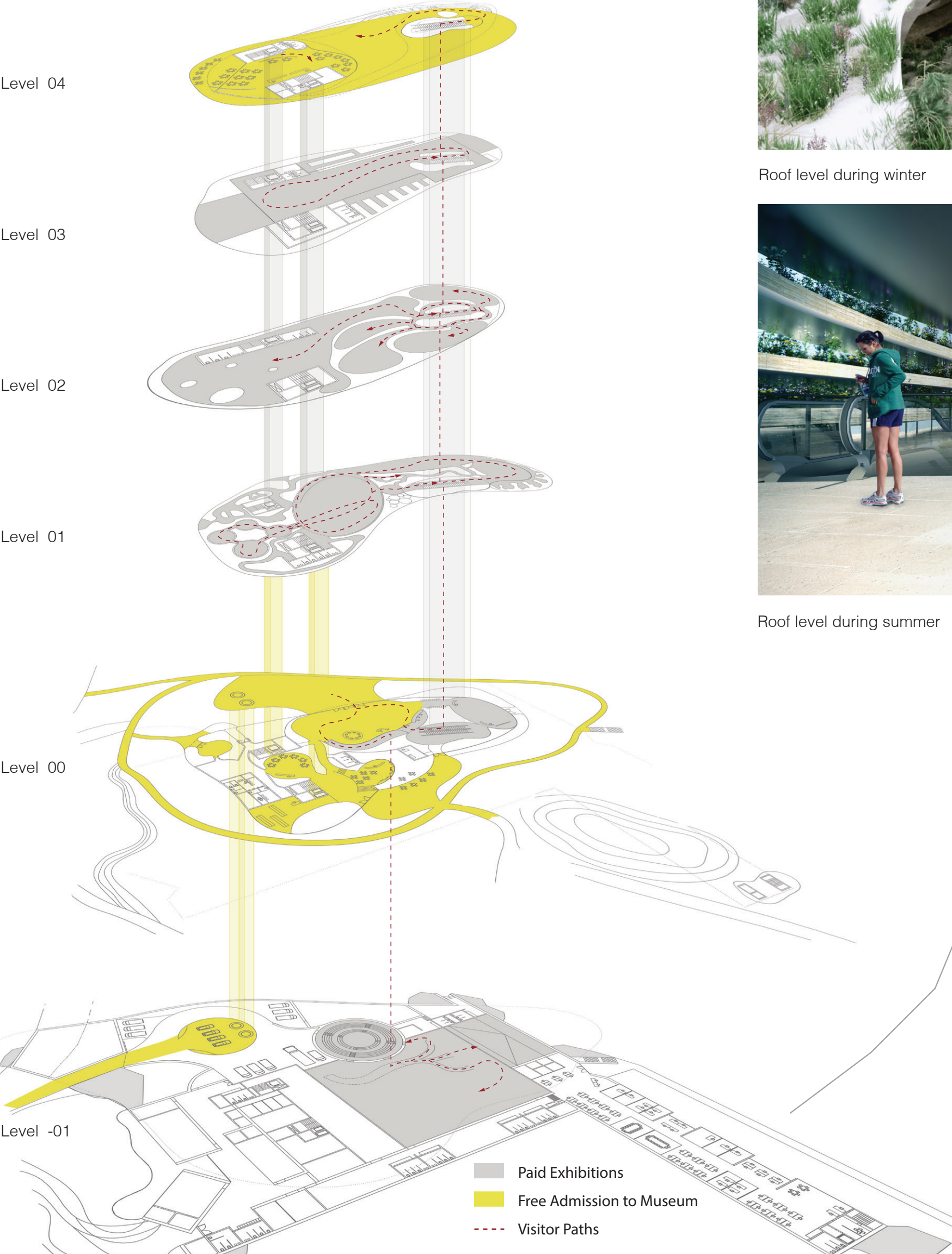


The museum's entrance courtyard can be seen from the city's rive droite. Enshrouding and embracing incoming visitors, this space then forks towards the cloakroom and cafeteria, souvenir shop and bar. The ramp leading from the entrance hall to the 4th-level temporary galleries assumes a separate track, which ventures underground, winding out of sight. From the entrance hall, visitors can take the escalator, two elevators, service lifts or two staircases to reach all floors, making all parts of the museum accessible. The uniqueness of the museum's traffic flow lies in the fact that gradually, layer by layer, visitors walk throughout the establishment, all the way to the roof terrace, where they can fully appreciate the empty spaces, now that they have soaked in the multifaceted experience and ample taxonomic information.

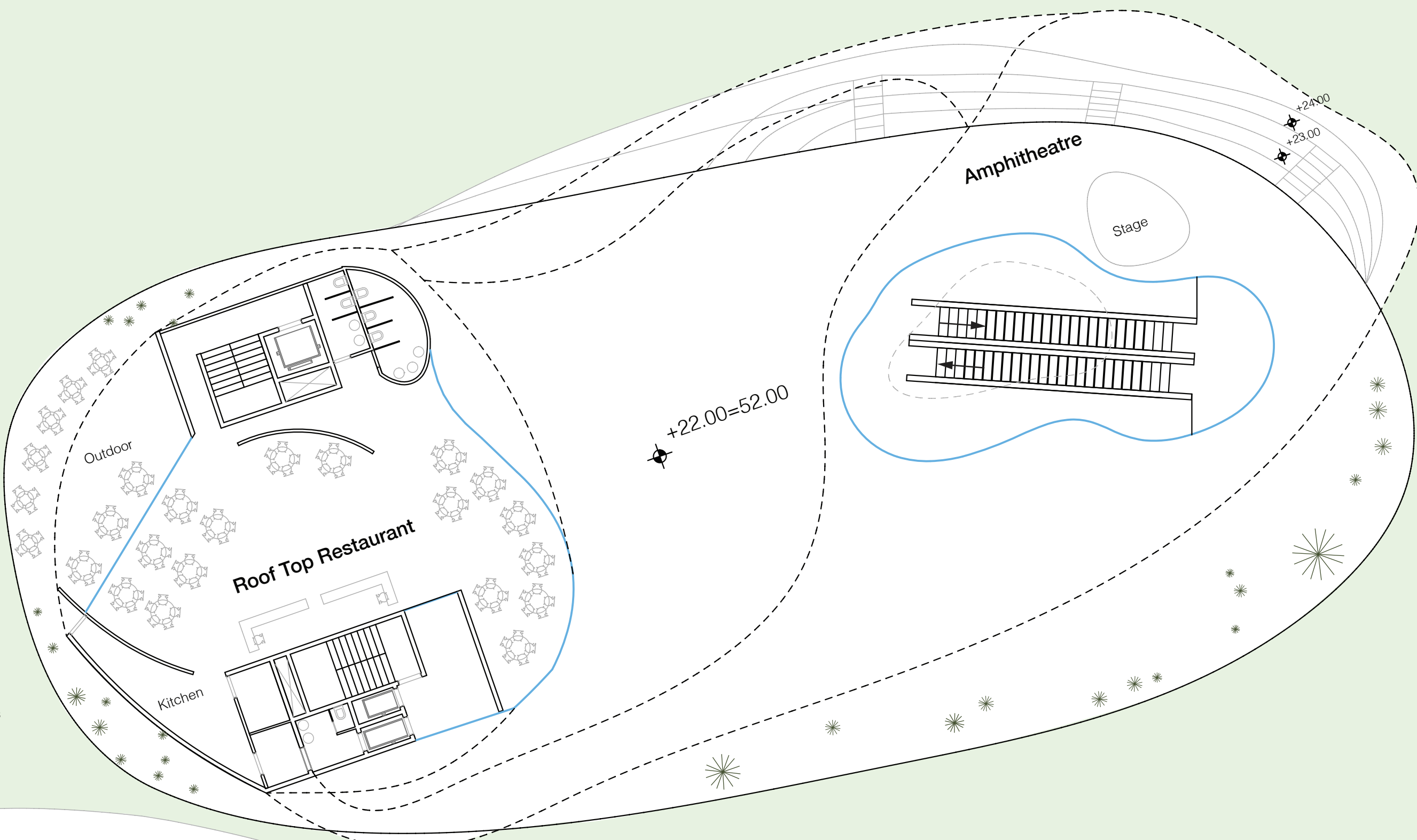


Roof level during winter



Roof level during summer

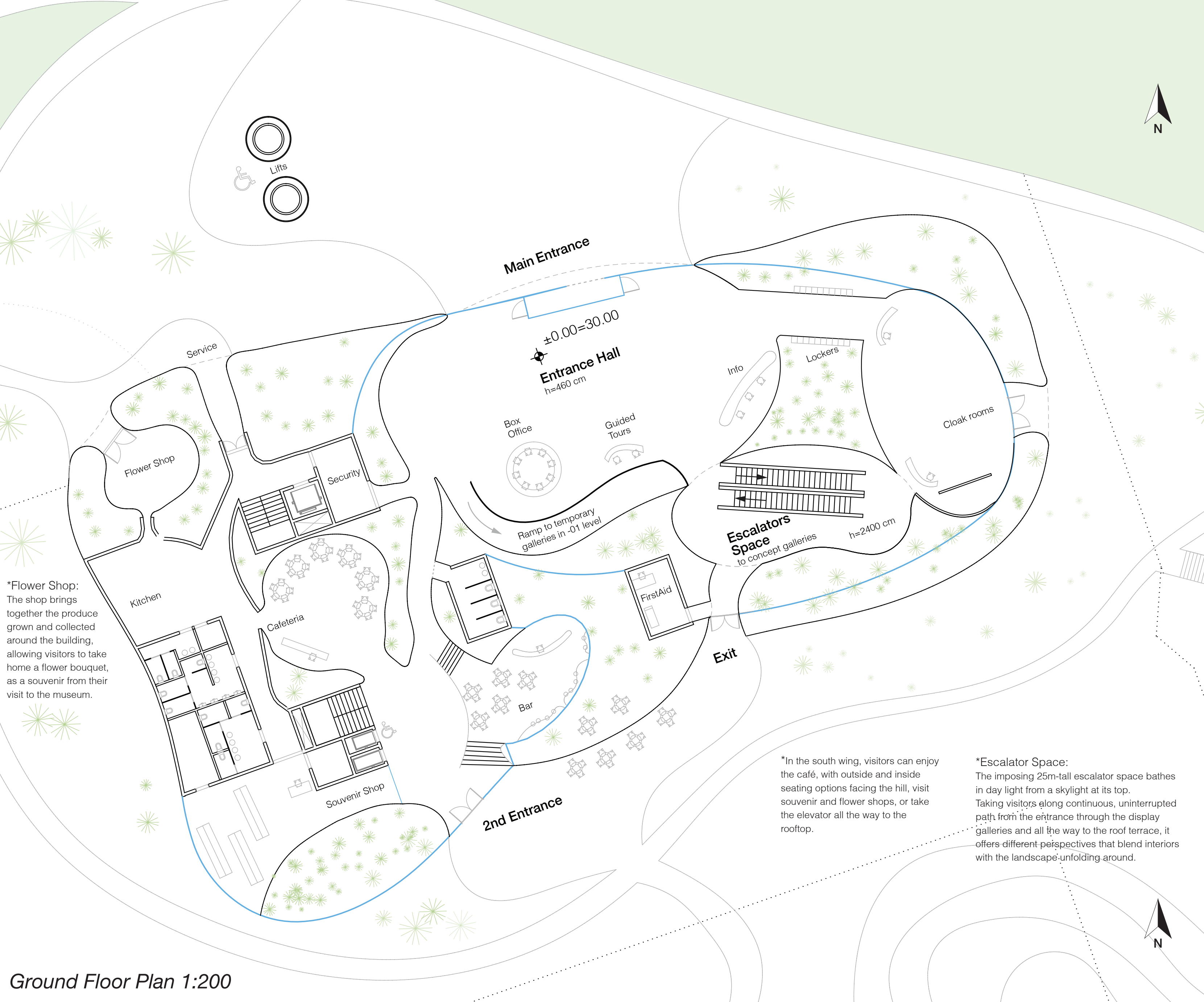
Roof Floor Plan 1:200



***Roof Terrace**
Visitors can enjoy a restaurant, with 360° elevated view of the island and cityscape. An open air amphitheatre can host special events and shows independently of museum activities, and is accessible by both escalators and directly from the secondary entrance elevator.



Main entrance



***Flower Shop:**
The shop brings together the produce grown and collected around the building, allowing visitors to take home a flower bouquet, as a souvenir from their visit to the museum.

***In the south wing,** visitors can enjoy the café, with outside and inside seating options facing the hill, visit souvenir and flower shops, or take the elevator all the way to the rooftop.

***Escalator Space:**
The imposing 25m-tall escalator space bathes in day light from a skylight at its top. Taking visitors along continuous, uninterrupted path from the entrance through the display galleries and all the way to the roof terrace, it offers different perspectives that blend interiors with the landscape unfolding around.

Ground Floor Plan 1:200