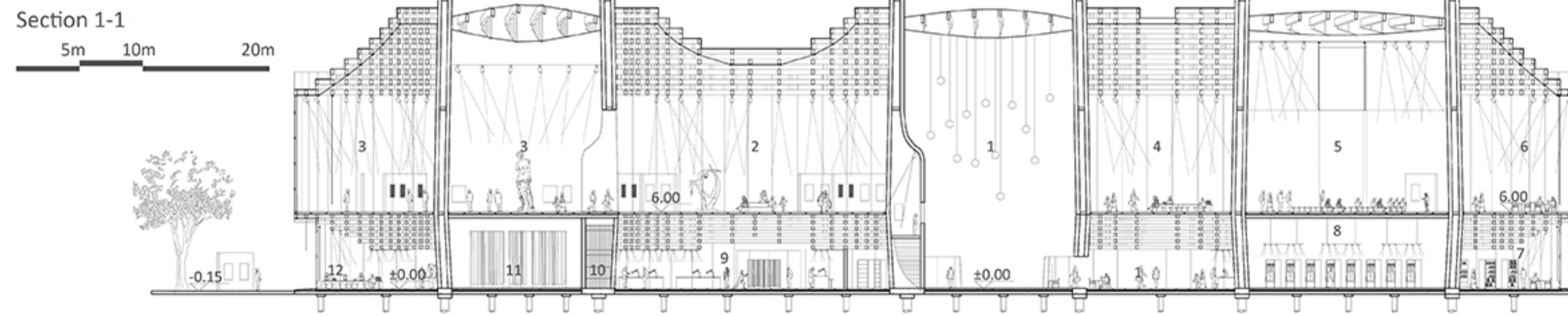
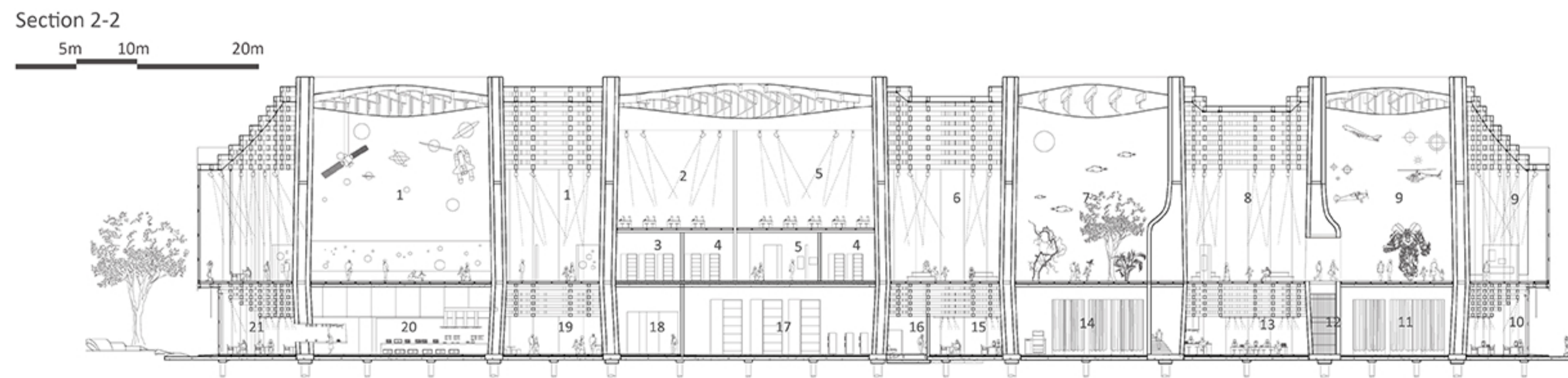


- 1 entrance hall upper space
- 2 introductory space
- 3 temporary galleries
- 4 human gallery
- 5 machine gallery
- 6 nature gallery
- 7 flexible space
- 8 storage
- 9 technical room
- 10 planetarium
- 11 experimentorium
- 12 wet storage
- 13 dry storage
- 14 laboratories
- 15 3D/4D ticket
- 16 rest space
- 17 reading space



- 1 entrance hall
- 2 temporary galleries
- 3 human gallery
- 4 rest space
- 5 flexible space
- 6 reading space
- 7 souvenir shop
- 8 cloakrooms
- 9 delivery, packing space
- 10 storage
- 11 storage/service for human gallery
- 12 workshops



- 1 planetarium
- 2 laboratories
- 3 dry storage
- 4 wet storage
- 5 experimentorium
- 6 rest space
- 7 nature gallery
- 8 temporary galleries
- 9 machine gallery
- 10 workshops
- 11 storage/service for machine gallery
- 12 storage
- 13 hot-desking
- 14 storage/service for nature gallery
- 15 office space
- 16 washing room
- 17 IT rooms
- 18 plant space
- 19 rest space
- 20 main kitchen
- 21 cafeteria



## Circulation Loop-2

The program structure of second floor is similar to the one of first floor, but in a different functional logic. Here, each core has a relatively large height and a straight connection with skylight if needed. Each contains different specific function, including three experience halls for theme-galleries: Human/Machine/Nature, and four event-spaces: Black Box, Planetarium, Research Lab, Experimentorium. Accordingly, the fluid space surrounding these cores is open, transitional and interactive loops, including introductory space, all galleries, study space, etc. And the furthest loop is a panorama-viewing hallway with a white, soft veil separating interior space.